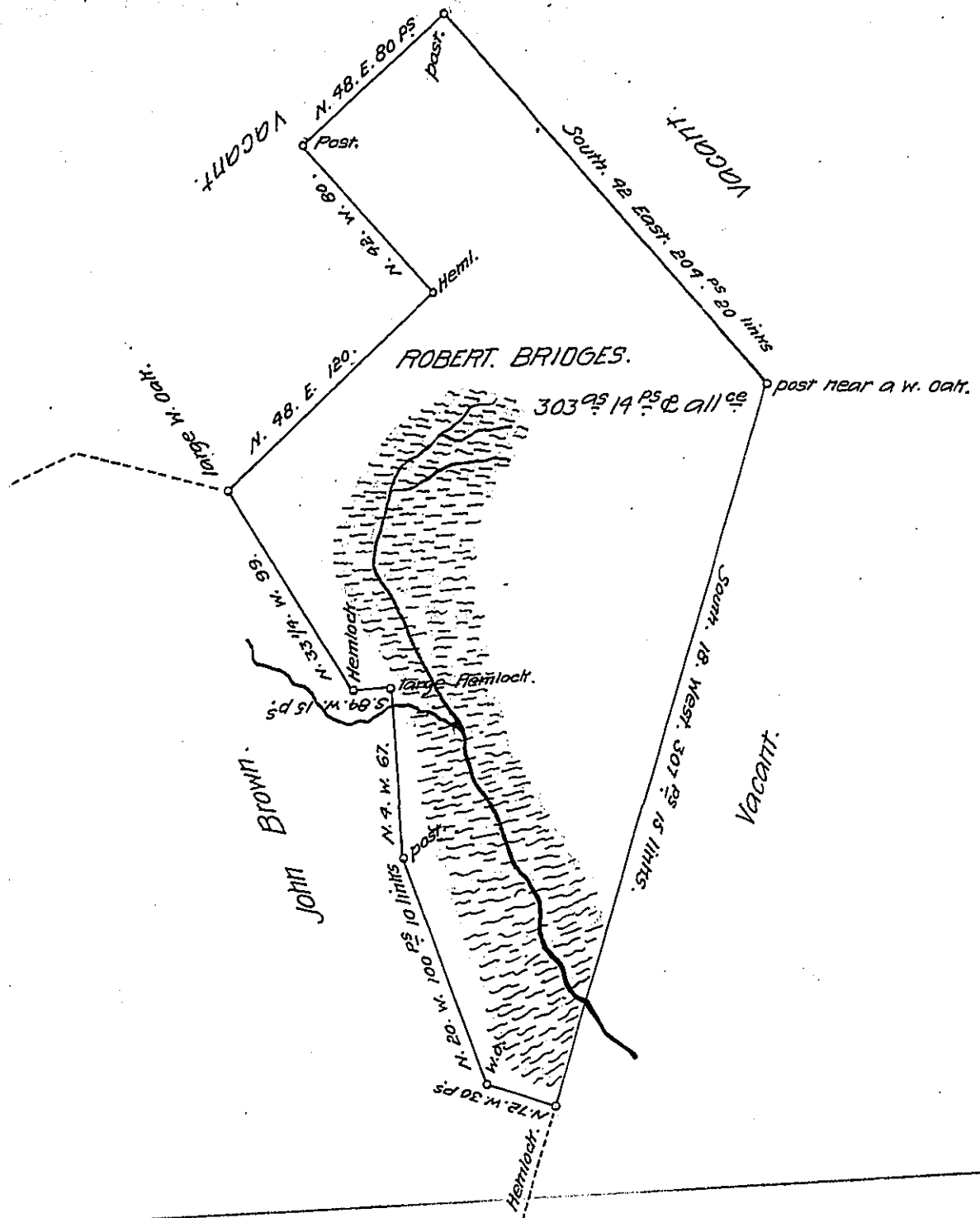


FORM NO. 1.



Draft of a Tract of Land called \_\_\_\_\_ situate near a small Lake the waters of which empty into the North East Side of the Falls Creek in the County of Luzerne and adjoining Land Surveyed for John Brown Surveyed for Robert Bridges the Twenty fifth Day of October 1800 in pursuance of a Warrant dated the Sixth Day of August 1773 containing Three hundred and three Acres and fourteen Perches and the usual allowance of Six per Centum for Roads &c. by Tho<sup>s</sup> Sambourne Dep<sup>y</sup> Surv<sup>r</sup>

To Samuel Cochran Esq<sup>r</sup>  
Surveyor General.

IN TESTIMONY that the above is a copy of the original remaining on file in the Department of Internal Affairs of Pennsylvania, made conformably to an Act of Assembly approved the 16th day of February, 1833, I have hereunto set my Hand and caused the Seal of said Department to be affixed at Harrisburg, this twenty fifth day of February 1908.

*Henry Howard*  
Secretary of Internal Affairs.